



GlueArt

Fixing Systems
RESIDENTIAL & Hi Fi
PRO AUDIO & STUDIO

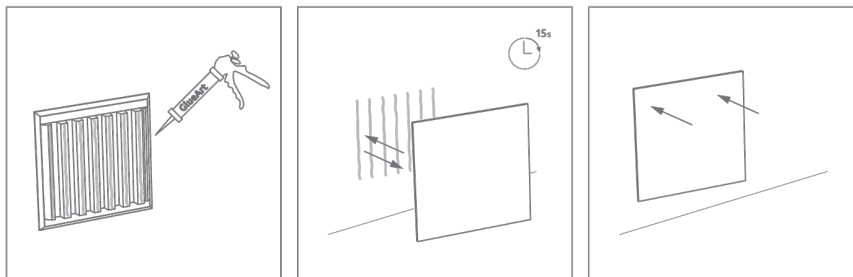
Specifications

GlueArt

GlueArt is made from E-SBR, and specifically designed to bond our acoustic panels. SBR (styrene-butadiene rubber) is a polymer with superior adhesive efficiency; in comparison with other products on the market it presents a higher durability, reduced shrinkage, increased flexibility and is resistant to emulsification in damp conditions. It is suitable for a vast range of surfaces, including cement, painted surfaces, stone, wallpaper, plasterboard, wood, chipboard, PVC, expanded plastic, mineral fibres and metal.



-



Description

One Tube installs either 7 flat foam panels (Agad, Thor, Myron E, etc.) or 5 nestled foam panels (framed absorbers).

Instructions:

1. Apply the adhesive to the back of the panel with a pressure gun.
If applying to an extremely irregular surface, apply adhesive to both the panel and the target wall area.
2. Press together immediately and apply pressure for 15 seconds.
3. Remove the panel from the wall, allowing the glue to oxidize, wait 15 seconds, and then re-apply the panel to the target area, applying pressure for 15 seconds.

-

Make sure the target area is dry, has a stable finish, and is free of dust and grease. We recommend cleaning with a wire brush before starting.
GlueArt can be used on bare cement, painted surfaces, stone, wallpaper, plasterboard, wood, chipboard, PVC, expanded plastic, mineral fibres and metal.



hello@artnovion.com
www.artnovion.com